



PKJR-400, PKJR-750

### PKJR Multi-purpose Pumps

Portable site pump with robust and lightweight design.

Shaft mounted agitator allows smooth suction of sand and mud.

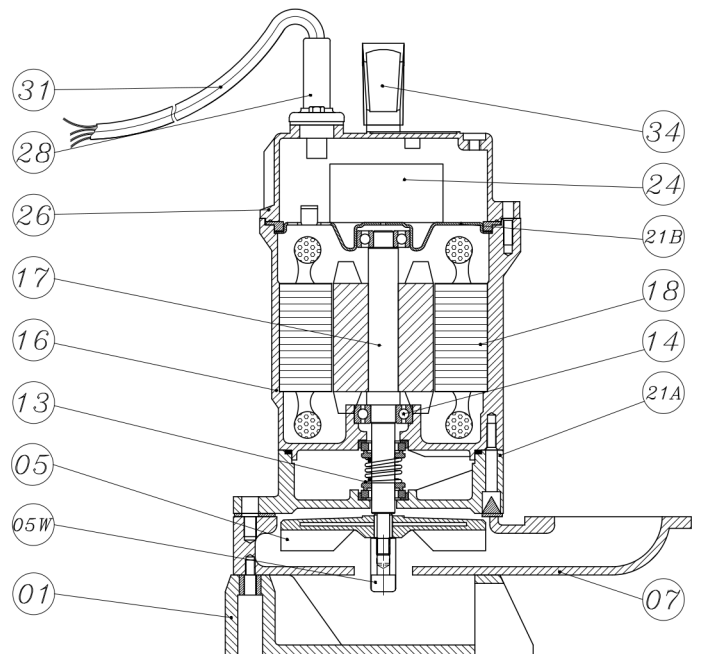
Double mechanical seals.

Thermal overload protection guards against high amperage and high temperature.

Available with float switch for automatic operation.

Solid construction and light to carry.

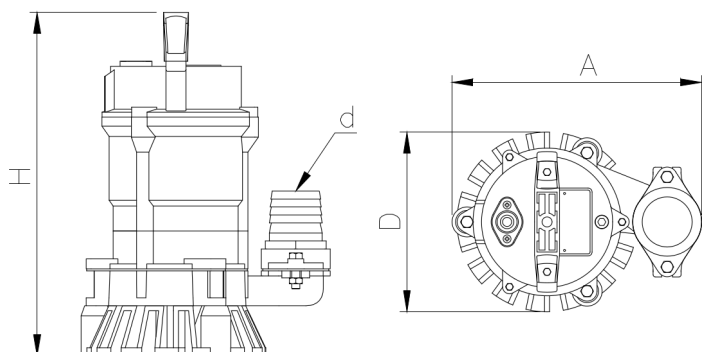
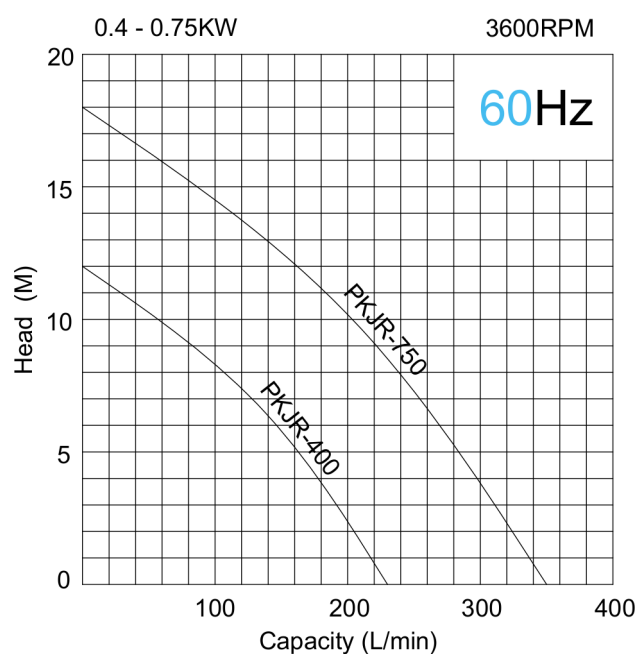
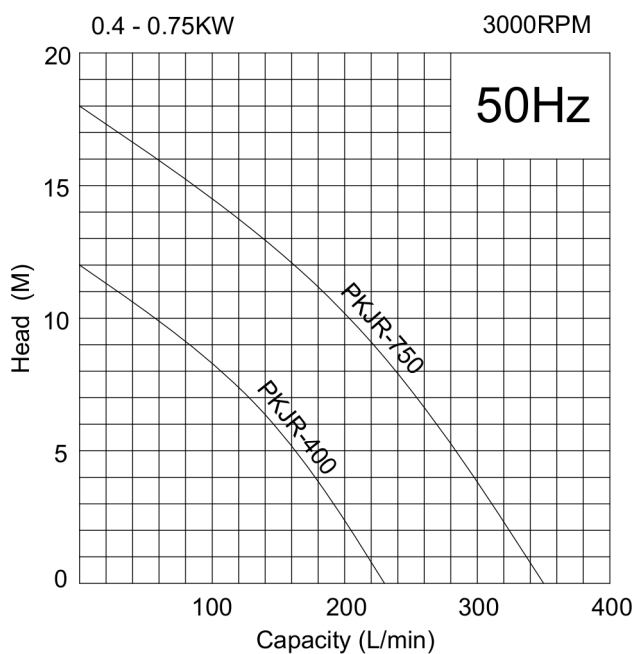
| Part NO. | Description        | Materials |
|----------|--------------------|-----------|
| 01       | Strainer           | PVC       |
| 05       | Impeller           | TPU       |
| 05W      | Agitator           | SMF5030   |
| 07       | Pump housing       | FC 200    |
| 13       | Mechanical seal    | C/C,S/S   |
| 14       | Bearing            |           |
| 16       | Motor casing       | ACD12     |
| 17       | Rotor              | SUS410    |
| 18       | Stator             |           |
| 21A      | Motor bottom cover | FC 200    |
| 21B      | Motor Upper cover  | SS41      |
| 24       | Condenser          |           |
| 26       | Upper cover        | ACD12     |
| 28       | Rubber sleeve      | PVC       |
| 31       | Cable              | STOW      |
| 34       | Handle             | PA6       |



# PKJR Performance Curve

50/60

| Pump Type | Output KW | Out put HP | Discharge Inch | Voltage              | Max    |                |          | Cable M | Weight kg |
|-----------|-----------|------------|----------------|----------------------|--------|----------------|----------|---------|-----------|
|           |           |            |                |                      | Head M | Capacity L/min | Solid mm |         |           |
| PKJR-400  | 0.4       | 0.5        | 2              | 1 phase<br>100V-240V | 12/12  | 230/230        | 10       | 10      | 12        |
| PKJR-750  | 0.75      | 1          | 2 or 3         |                      | 18/18  | 350/350        | 10       | 10      | 16        |



Dimensions (mm)

| PUMP TYPE | DISCHARGE BORE   | PUMP SECTION |     |     |
|-----------|------------------|--------------|-----|-----|
|           | d                | A            | D   | H   |
| PKJR-400  | 2"(50)           | 249          | 180 | 343 |
| PKJR-750  | 2"(50) or 3"(80) | 279          | 180 | 368 |