



HIGH PRESSURE

KOSHIN HIGH PRESSURE PUMP



SERM-50V

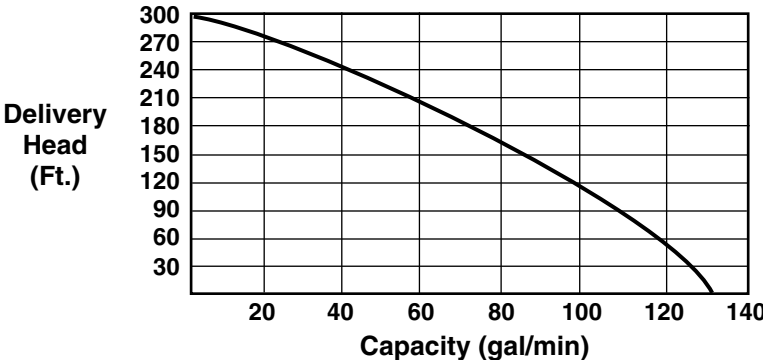
Features

- Powerful, high RPM Mitsubishi OHV engine with low oil sensor.
- Only 75 lbs. due to die cast aluminum.
- Cast iron impeller and volute are wear resistant.
- Full roll cage frame protects pump and engine with vibration isolator.
- Pumps up to 295 feet head or 132 gpm.

Applications

- To power sprinkling systems, irrigation.
- Remote area fire fighting.
- Washing down equipment.
- Pushing water long distances or to great heights.

Performance



Specifications

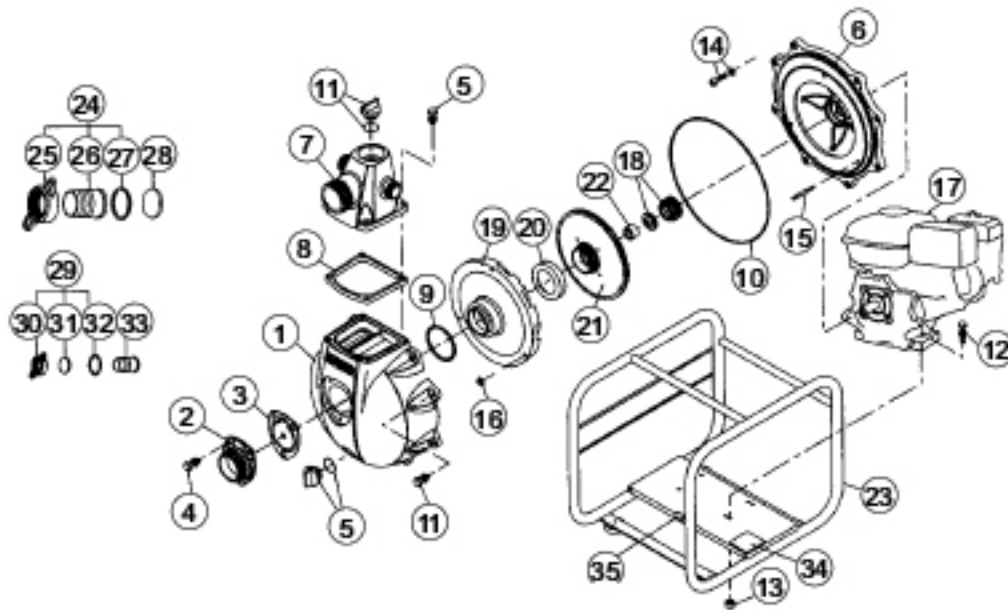
| Model | SERM-50V |
|----------------------|------------------|
| Suction | 2" |
| Discharge Size | (1) 2" / (2) 1" |
| Maximum Capacity | 7920 GPH |
| Maximum Head | 295' |
| Max. Suction Lift | 26' |
| Maximum PSI | 127 PSI |
| Engine Type | Mitsubishi GM182 |
| Displacement | 181 cc |
| Horsepower | 6.0 HP |
| Fuel Tank Capacity | 1.0 GAL |
| Continuous Operation | 2.0 HRS |
| Dry Weight | 75 lb |



KOSHIN AMERICA CORP.

1218 Remington Road • Schaumburg, IL 60173
847/884-1570 • 800/634-4092 • FAX 847/310-0740

Distributed by:



**2" HIGH PRESSURE
MITSUBISHI GM182 6.0 HP**

| REF NO. | PART NO. | DESCRIPTION | QTY. | REF NO. | PART NO. | DESCRIPTION | QTY. |
|---------|-----------|--|------|---------|----------|---------------------------|------|
| 1 | 0120393 | PUMP CASING | 1 | 18 | 0120389 | MECHANICAL SEAL ϕ 20 | 1 |
| 2 | 0120408 | SUCTION FLANGE | 1 | 19 | 0120390 | VOLUTE CASING | 1 |
| 3 | 0120398 | CHECK VALVE | 1 | 20 | 0120397 | WEAR RING | 1 |
| 4 | 743119045 | HEXAGON BOLT M8 x 20 | 3 | 21 | 0117990 | IMPELLER ASSEMBLY | 1 |
| 5 | 0118078 | 20A PLUG SET | 2 | 22 | 0120448 | IMPELLER BUSHING | 1 |
| 6 | 0120396 | FLANGE BRACKET | 1 | 23 | 0117992 | BASE SET | 1 |
| 7 | 0120409 | DELIVERY FLANGE | 1 | 24 | 0128078 | COUPLING SET (50) | 1 |
| 8 | 0120399 | DELIVERY FLANGE PACKING | 1 | 25 | 0120629 | COUPLING | 1 |
| 9 | 889855056 | O-RING P56 | 1 | 26 | 0112453 | HOSE NIPPLE | 1 |
| 10 | 0115016 | O-RING 1517-51.5 | 1 | 27 | 0110766 | COUPLING PACKING | 1 |
| 11 | 743119047 | HEXAGON BOLT M8 x 25 | 12 | 28 | 0120486 | CHECK PLATE (50) | 1 |
| 12 | 743119053 | HEXAGON BOLT M8 x 40 | 4 | 29 | 0128078 | CHECK COUPLING SET (25) | 2 |
| 13 | 827419008 | HEXAGON NUT M8 | 4 | 30 | 0110422 | COUPLING | 2 |
| 14 | 0120437 | HEXAGON SOCKET BOLT + SEAL WASHER M8 x 60 | 4 | 31 | 0120485 | CHECK PLATE (25) | 2 |
| 15 | 0120438 | STUD BOLT M6 x 46 (12/12) | 3 | 32 | 0110192 | COUPLING PACKING | 2 |
| 16 | 0120439 | PLATE SPRING WASHER M6 | 3 | 33 | 0110423 | HOSE NIPPLE | 2 |
| 17 | | ENGINE | | 34 | | NAME PLATE | 1 |
| | | | | 35 | 0120471 | RUBBER PLATE | 1 |



KOSHIN PUMP

HIGH PRESSURE PUMPS